

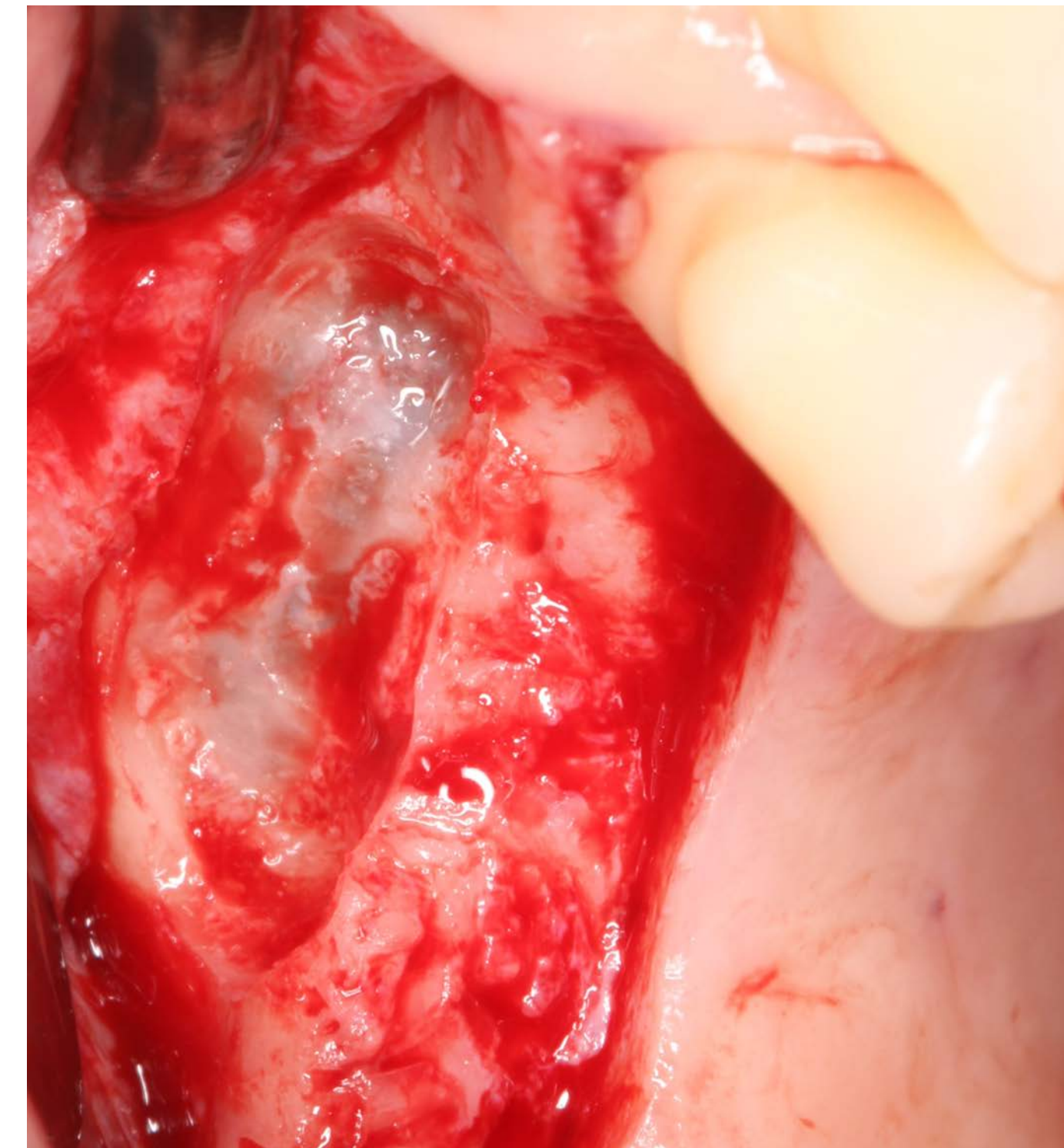
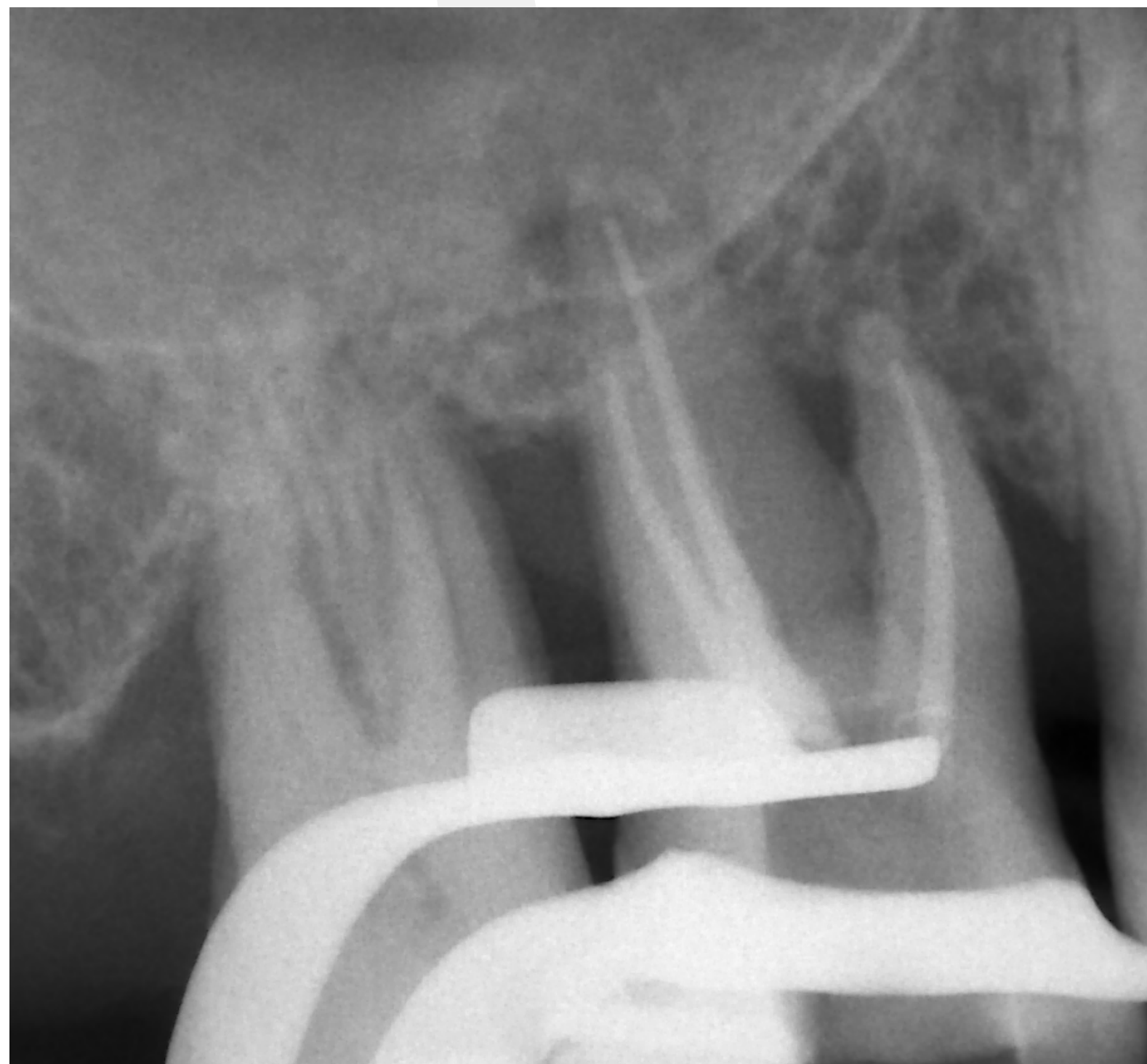
Поднятие дна верхнечелюстной пазухи с использованием комбинации K3M Smartgraft® + гиалуроновой кислоты hyaDENT BG® и оссифицируемой коллагеновой барьерной мембраны с поперечными связями

Клиническая, гистологическая и рентгенологическая оценка полученных результатов

Anton Friedmann

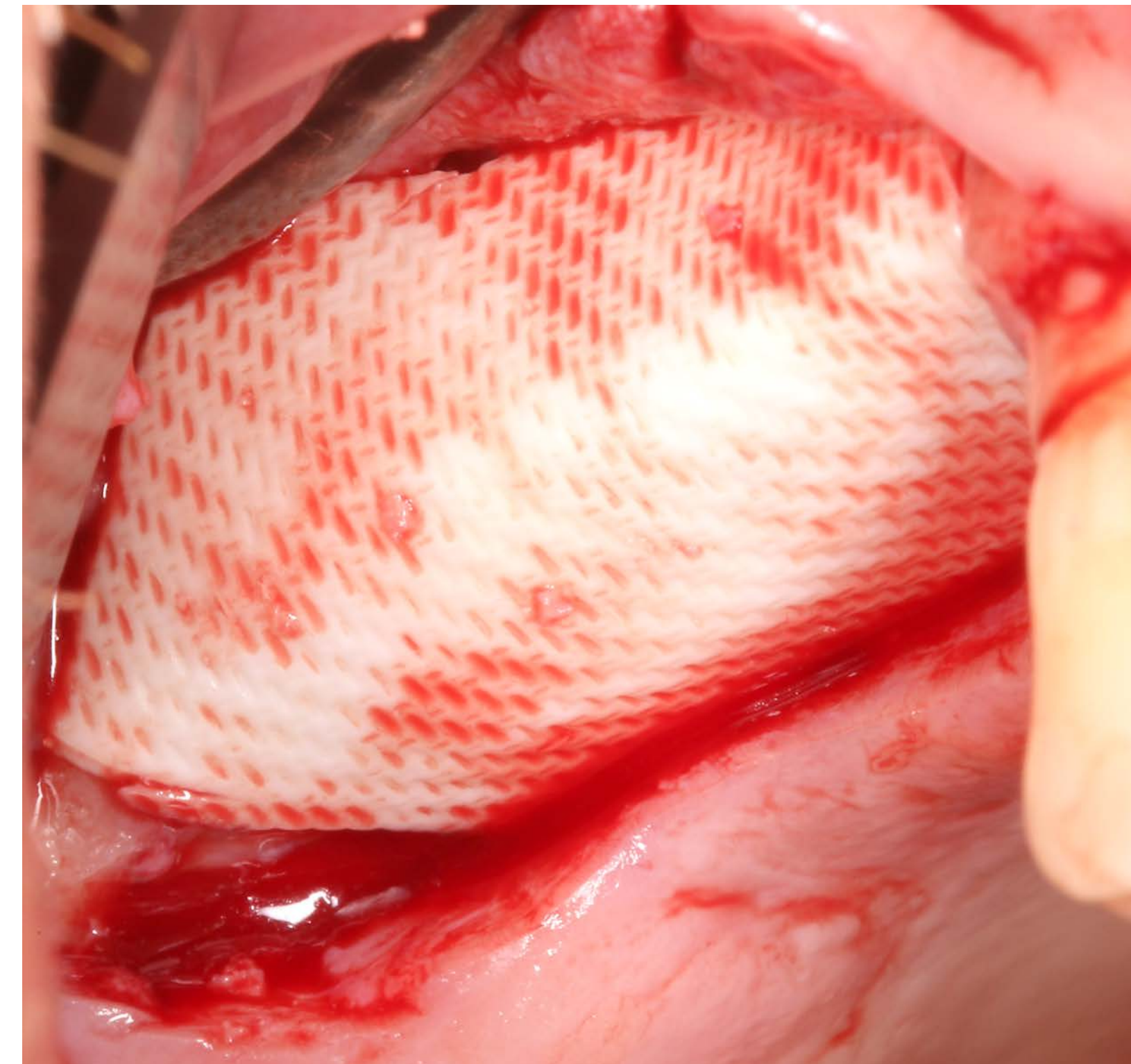
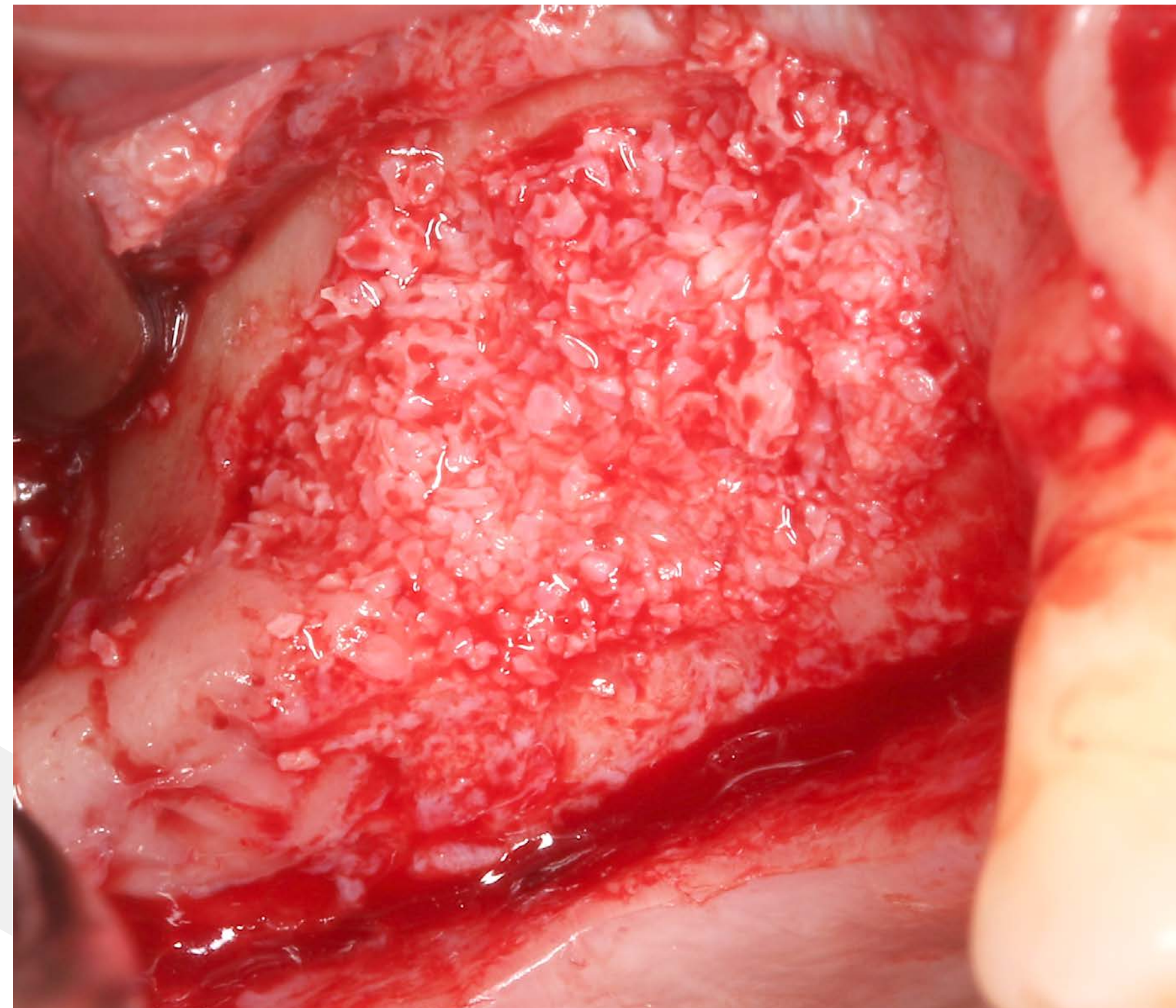
History of hopeless maxillary molars

- Residual subantral bone \approx 2 mm
- Lateral window approach \approx 6 months following tooth loss



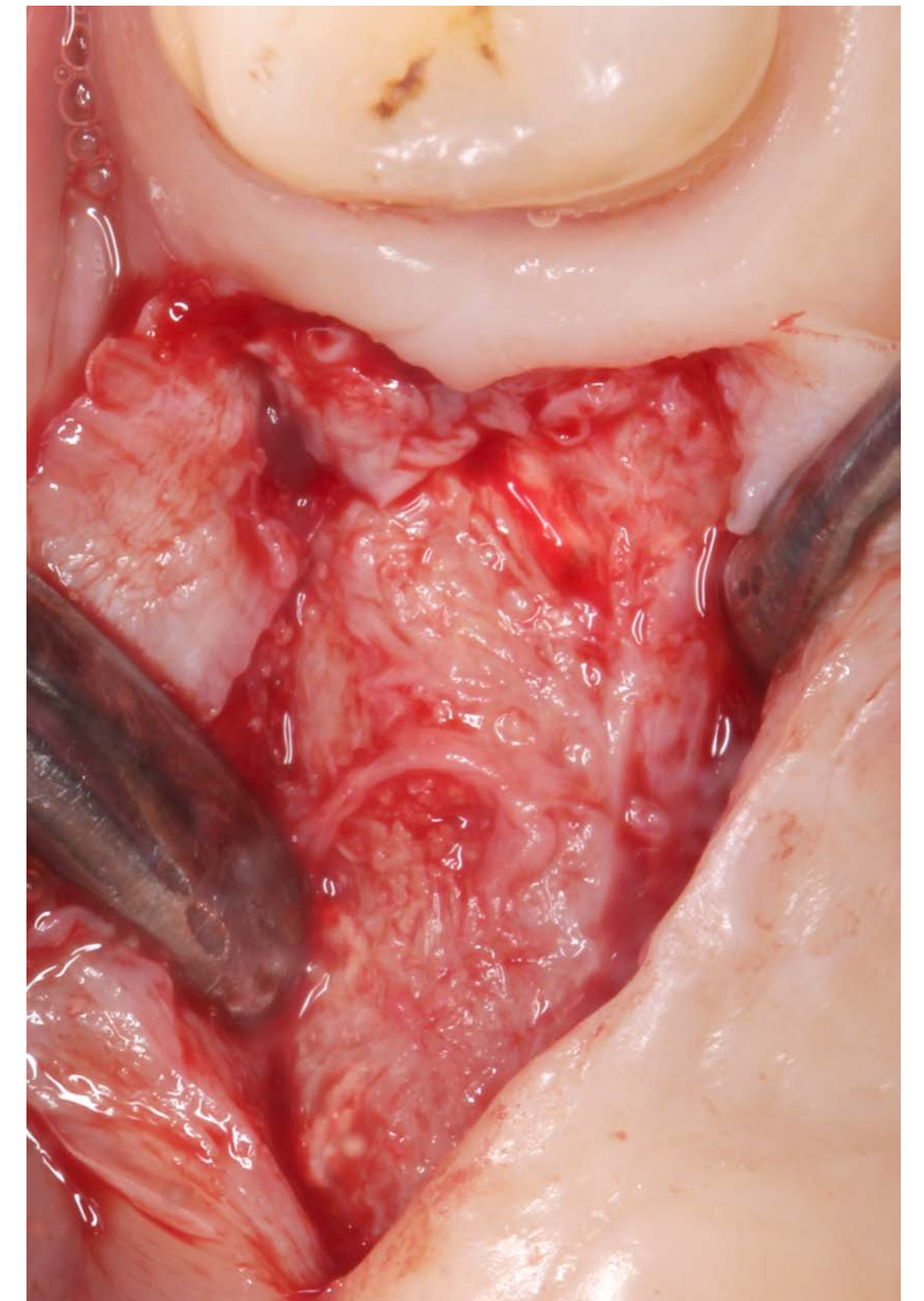
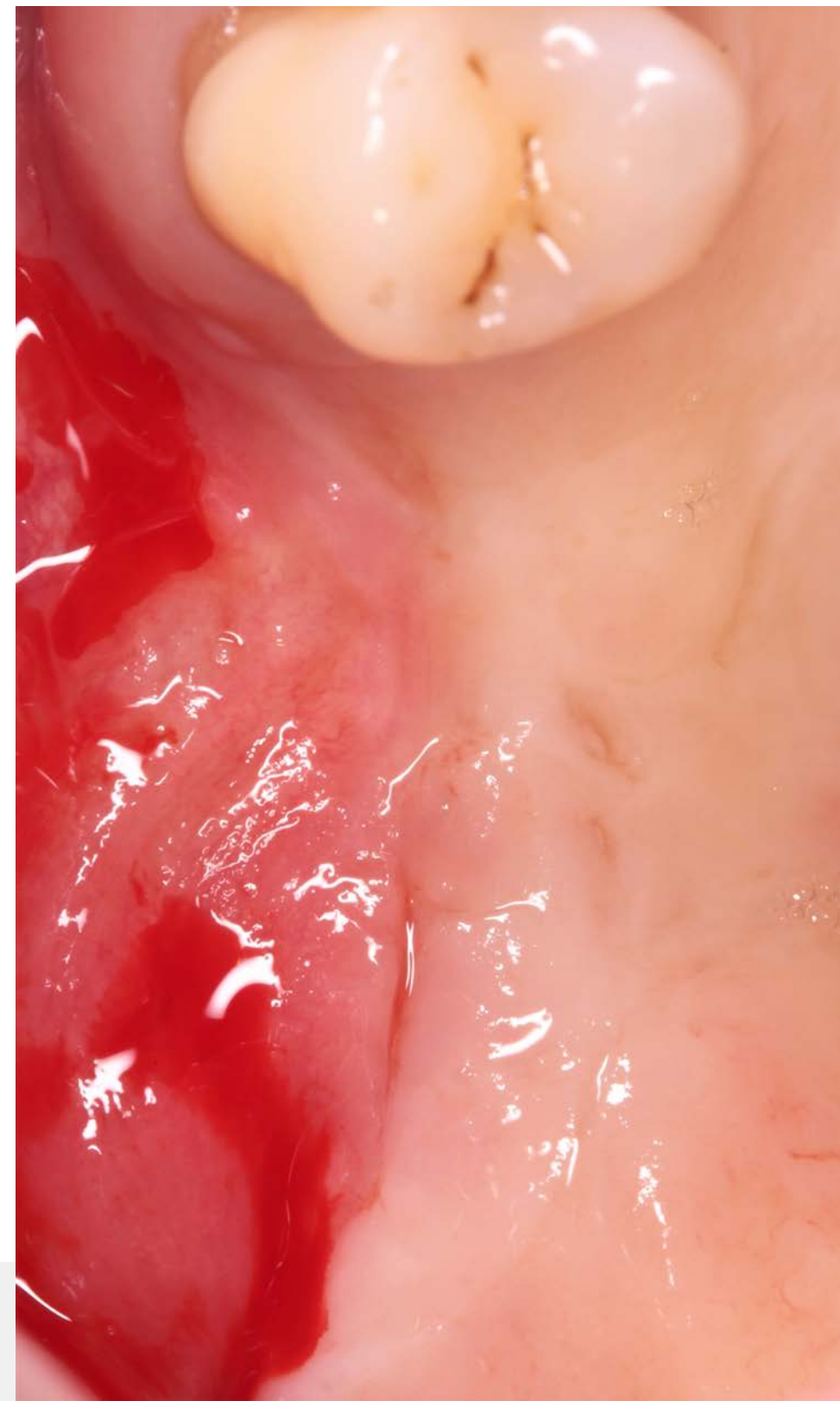
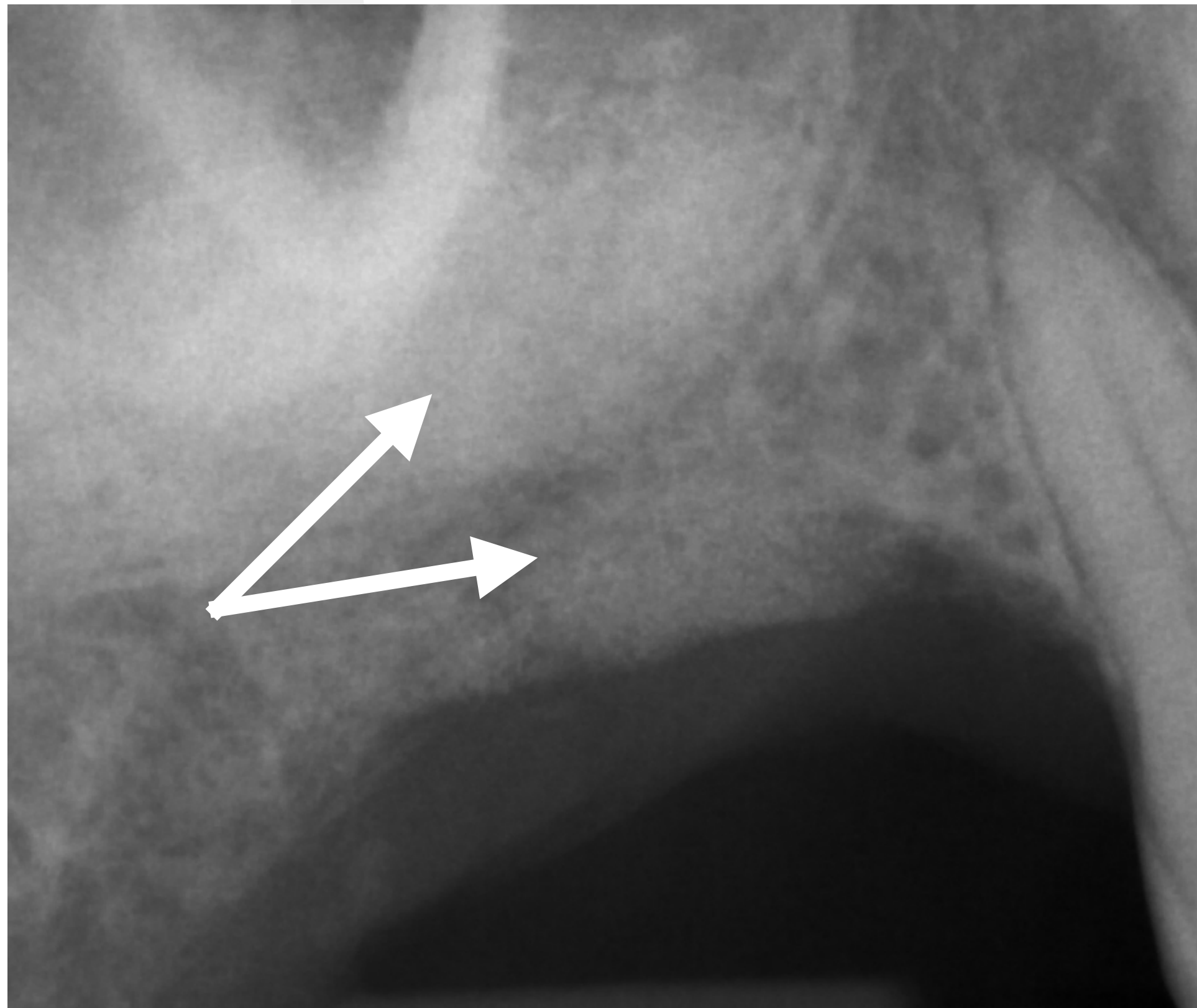
Sinus floor elevation and vertical (supracrestal) application of biomaterials

- Xenograft (Smartgraft®) hydrated with high weight hyaluronic acid (hyaDENT BG®)
- RCLC membrane in place covers full extension of the grafted area
- Separate membrane fixation unnecessary



Stage 2 surgery - re-entry and tissue sampling 8 months after SFE

- Periapical x-ray displays gain in mineralized tissue at the sinus and supracrestally (arrows)
- Soft tissue and ridge dimension at stage 2
- Macroscopically mature crestal bone across the ridge



Stage 2 - implant placement 8 months later

- Ridge dimension achieved 8 months after SFE and lateral/vertical augmentation
- WNI (Straumann SP/WN/10 mm length) in place
- Gingiva former in place for transmucosal healing

